



GENERAL

Name	:KOPARAN
Type	:Backhoe Dredger
Date and place built	:2016/Turkey
Call Sign	:TCA 4112
Clas	:Phoenix Register of Shipping
P&I	:Hanseatic Underwriters
Flag	:Turkey
LOA	:36.29 m
Breadth	:13.86 m
Depth	:2.95 m
Tonnage	:124 Net / 414 Gros
Accommodation (person)	:2 Persons
Spud Length	:26 m

ENGINES & GENERATORS

Generator 1	:Alimar Jen 66 kW
Generator 2	:Alimar Jen 66 kW
Consumption per Day	: Fully Loaded 1.25t
D/O Fully Loaded	:75 m ³

EXCAVATOR

Model	: SENNEBOGEN 870R-2015
	426 hp(317 Kw)
Bucket volume (m ³)	:2.0 m ³
Max Dredging Depth (m)	:19 m

Nav. Equipments

VHF	:ICOM ICM 401
AIS	:TBCS KLAS BCS TRANSPONDER

Proprietary technology feature:

Foreshore Dredger Monitoring Systeme
GNSS anten +Gyro:Hemisphere

ARAS MARINE

ARAS DENİZ İNŞAAT A.Ş.

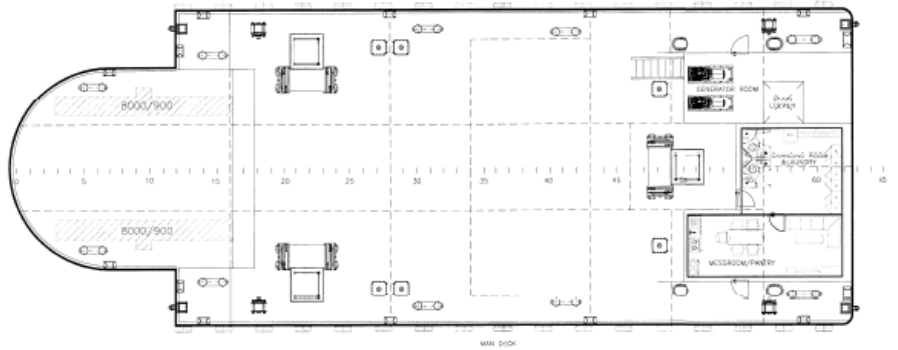
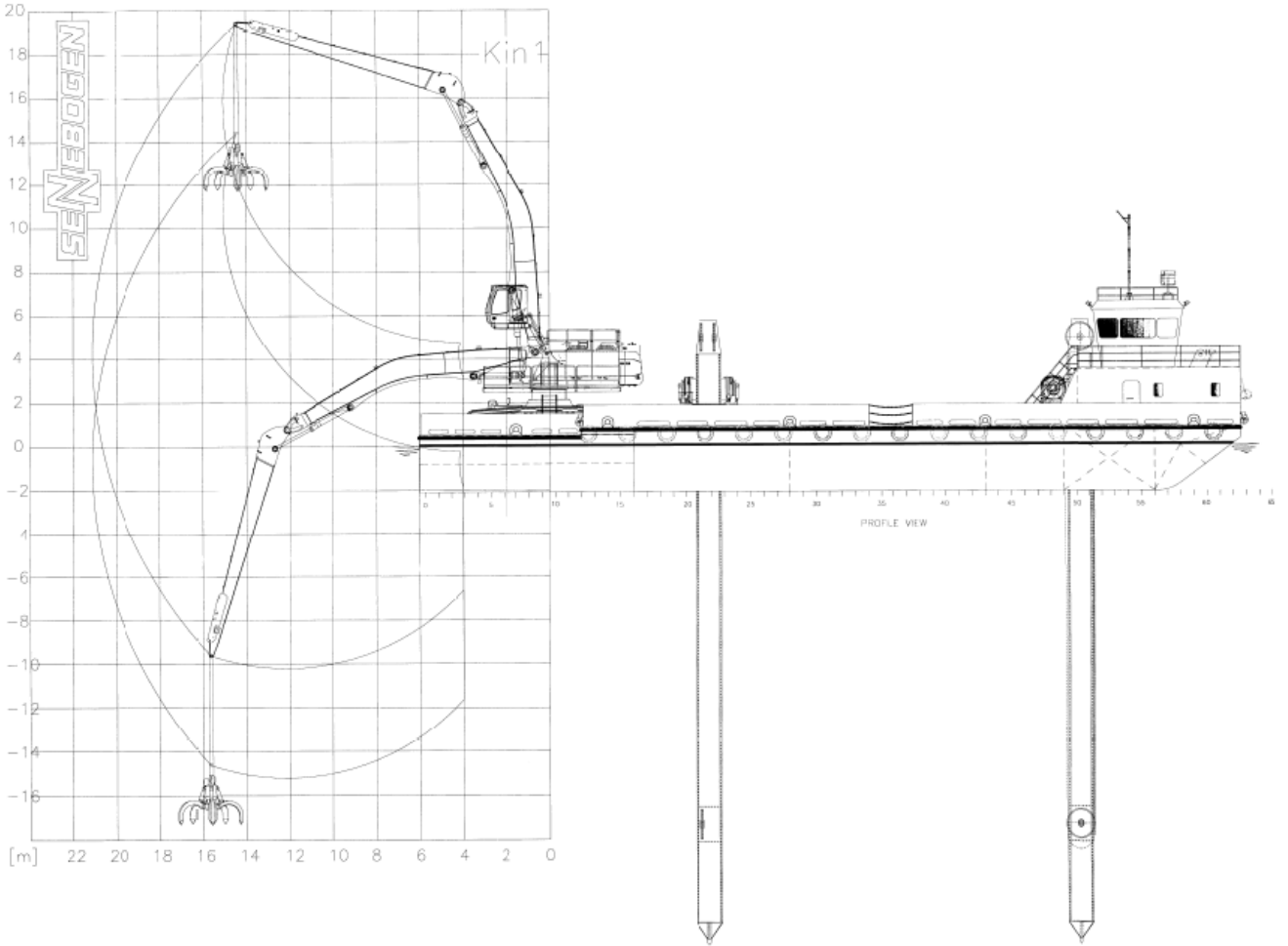
ARAS MARINE CONSTRUCTION CO. INC.

Postane Mah. Rauf Orbay Cad. No.233 34940 Tuzla / İSTANBUL TÜRKİYE

Tel: +90 (216) 446 53 09 Fax: +90 (216) 446 13 39 E-mail: info@aras-marine.com



FLOATING CRANE KOPARAN



AKAS DENİZ İNŞAATİ A.Ş.
ARAS MARINE CONSTRUCTION CO.
Postane Mah. Rauf Orbay Cad. No.233
34940 Tuzla / İSTANBUL - TÜRKİYE

Tel: +90 (216) 446 53 09 • Faks: +90 (216) 446 13 39

